

Section II.

TM 9-2320-280-24P-1

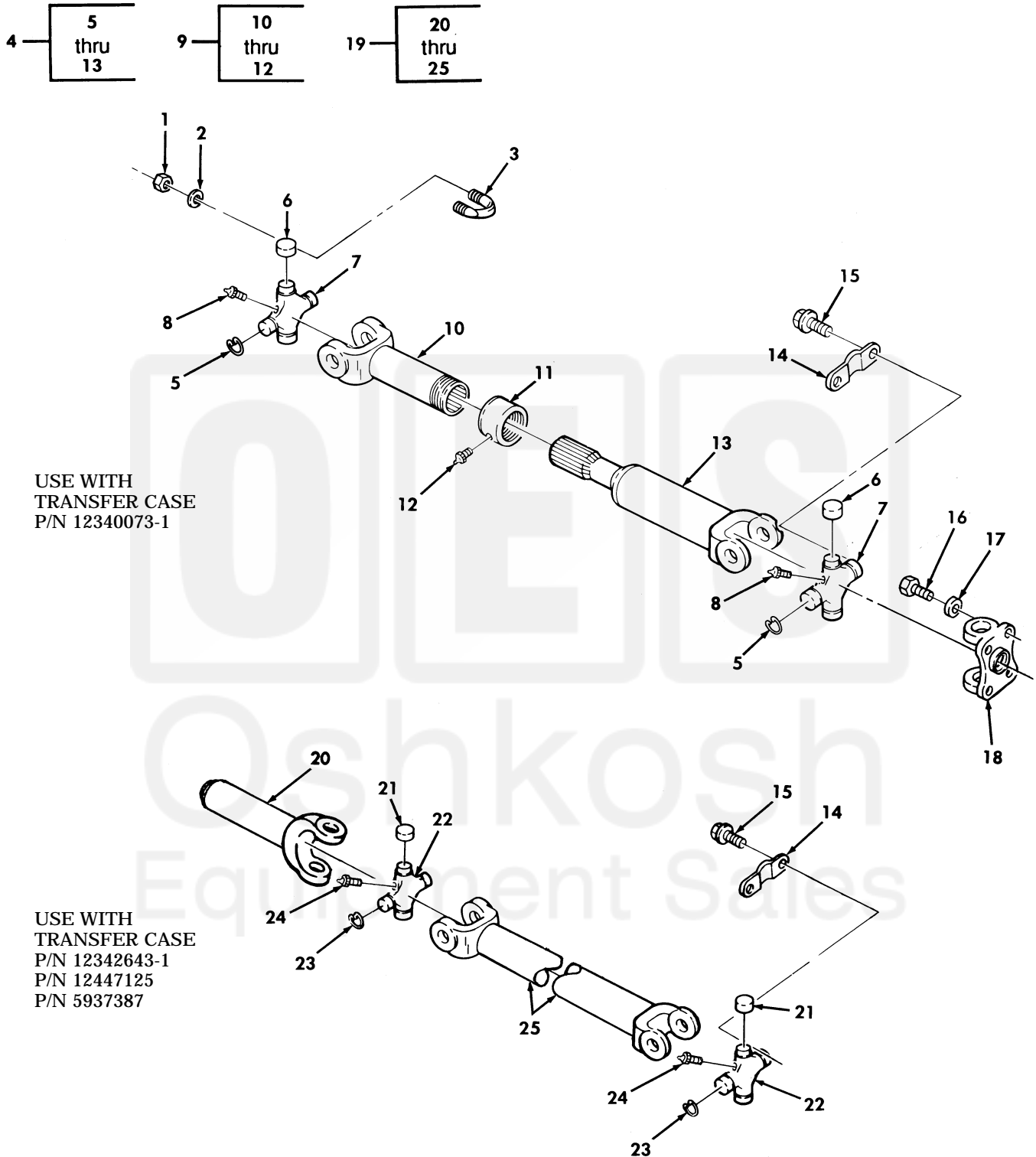


Figure 137. Rear Propeller Shaft Assemblies.

SECTION II		TM9-2320-280-24P						
(1)	(2)	(3)	(4)	(5)	(6)	(7)		
ITEM NO	SMR CODE	NSN	CAGEC	PART NUMBER	DESCRIPTION AND USABLE ON CODES(UOC)	QTY		
					ABOVE.....			
					UOC:H11,H13,H14,H15,H16,H17,H18,H20, H21,H24,H25,H26,H27,H28,MMM			
14	PAOZZ	5340011900807	95019	2-70-59	STRAP,RETAINING USBL EFF 44825 AND	2		
					ABOVE.....			
15	PAOZZ	5306011905760	95019	231401	BOLT,SELF-LOCKING USBL EFF 44825	4		
					AND ABOVE.....			
16	PAOZZ	5306011857052	7X677	9419293	BOLT,MACHINE USBL EFF 1 THRU 44824.	4		
					UOC:H11,H13,H14,H17,H18,H20,H24,H25, H26,H27,MMM			
17	PAOZZ	5310011854672	7X677	123153	WASHER,LOCK 7/16,USBL EFF 1 THRU	4		
					44824.....			
					UOC:H11,H13,H14,H17,H18,H20,H24,H25, H26,H27,MMM			
18	PFOZZ	2520012491506	95019	2-2-1209	YOKE,UNIVERSAL JOIN USBL EFF 1	1		
					THRU 44824.....			
					UOC:H11,H13,H14,H17,H18,H20,H24,H25, H26,H27,MMM			
19	PAOOO	2520013575044	34623	5937339	PROPELLER SHAFT USE WITH T-CASE P/N	1		
					5937387 AND 12332643-1.....			
					UOC:AVY,A11,A13,A14,A15,A20,A24,A25, A26,A27,B16,B17,B18,HVY			
19	PAOOO	2520014590050	34623	6007749	PROPELLER SHAFT WIT USE WITH T-CASE	1		
					P/N 12447125 WHEN KIT P/N 57K3498 IS			
					INSTALLED.....			
					UOC:H11,H13,H14,H15,H16,H17,H18,H20, H21,H24,H25,H26,H27,H28,MMM			
19	PAOOO	2520014132724	34623	6003666	PROPELLER SHAFT WIT.....	1		
					UOC:BVY,B15,B20,B24,B25,C17,NNN			
20	PAOZZ	2520013863384	95019	2-3-11781X	.YOKE,UNIVERSAL JOIN.....	1		
					UOC:AVY,A11,A13,A14,A15,A20,A24,A25, A26,A27,B16,B17,B18,HVY			
20	PAOZZ		95019	2-3-10831X	.YOKE,UNIVERSAL JOIN.....	1		
					UOC:BVY,B15,B20,B24,B25,C17,H11,H13, H14,H15,H16,H17,H18,H20,H21,H24,H25, H26,H27,H28,MMM,NNN			
21	KFOZZ		95019	2-6-288X	.BEARING RACE PART OF KIT P/N 5-213X	8		
22	KFOZZ		95019	2-5-848X	.CROSS ASSEMBLY PART OF KIT P/N	2		
					5-213X.....			
23	PAOZZ	5325001749829	19207	5226154	.RING,RETAINING PART OF KIT P/N	8		
					5-213X.....			
24	PAOZZ	4730000504203	13038	500174-1	.FITTING,LUBRICATION.....	2		
25	XAOZZ		95019	2-60-550	.SHAFT.....	1		
					UOC:AVY,A11,A13,A14,A15,A20,A24,A25, A26,A27,B16,B17,B18,HVY,H11,H13,H14, H15,H16,H17,H18,H20,H21,H24,H25,H26, H27,H28,MMM			
25	XAOZZ		95019	2-60-550A2	.SHAFT.....	1		
					UOC:BVY,B15,B20,B24,B25,C17,NNN			

END OF FIGURE